

January 4, 2008

## **New drawings for Summer 2008 construction at Westwood Complex**

Wold Architects & Engineers unveiled new drawings for Phase II construction projects at District 16's Westwood complex at a December school board meeting. The drawings are included here. The school district is in the midst of a four-year Facilities

Improvement Plan that includes a significant renovation, expansion, and building program. Throughout this four years, "Bond Project Updates" offer more details and are available on the home page of the district website.

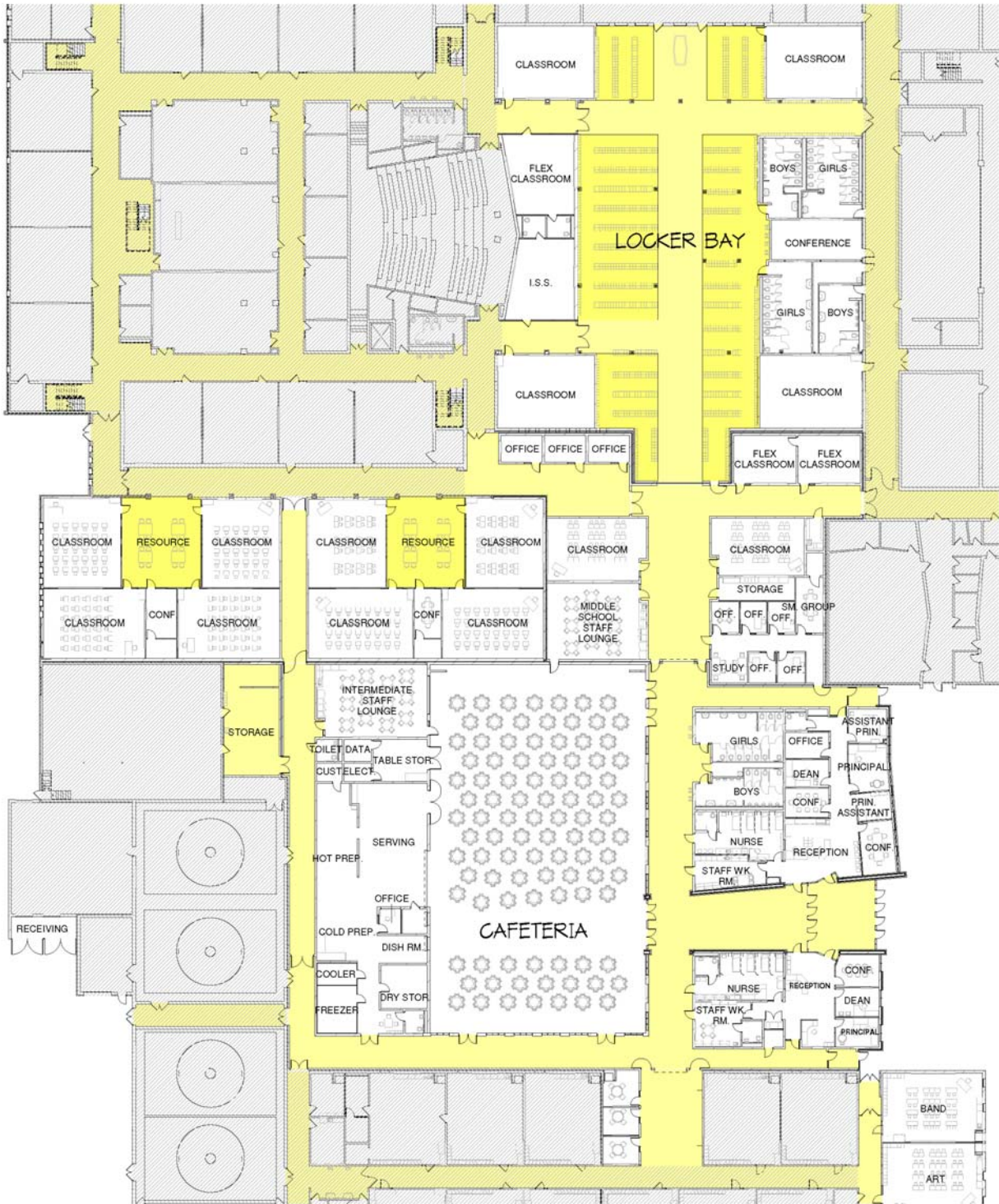
*Perspective View:*

### **New Main Entrance to Westwood Intermediate School and Westwood Middle School**

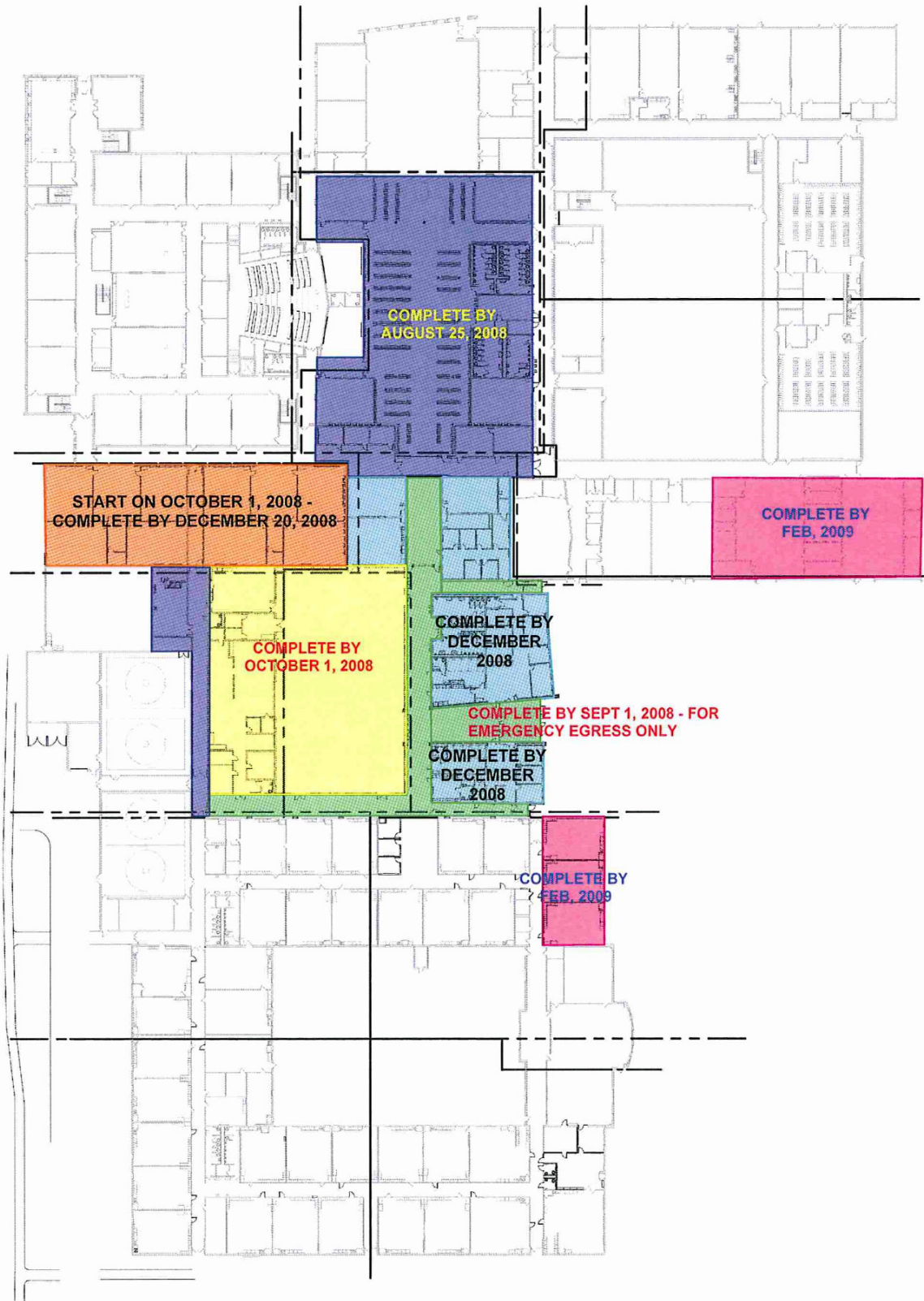




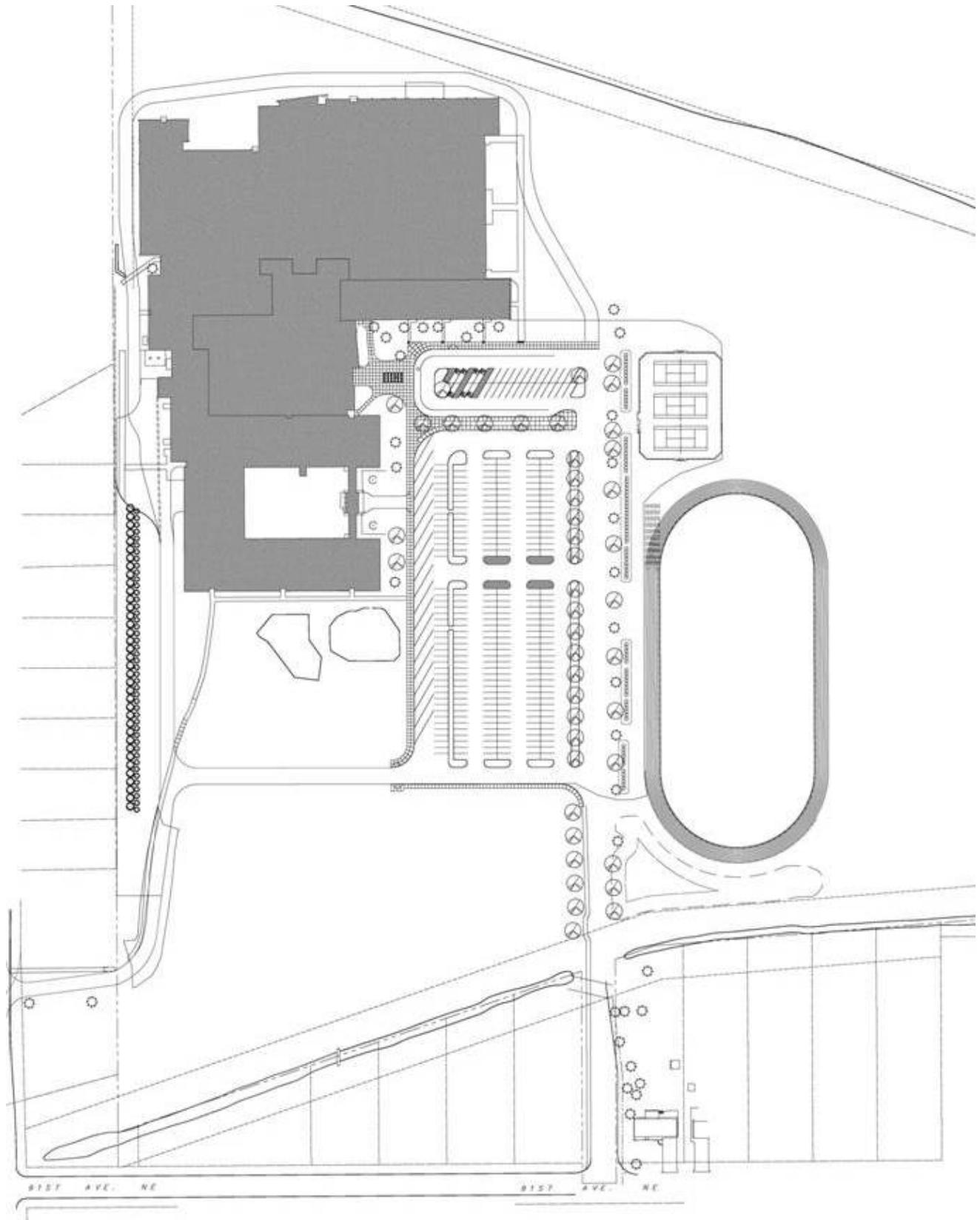
Westwood Complex  
New Addition Floor Plan



Westwood Complex  
Master Plan Phasing Diagram



Westwood Complex  
Site Plan



*Westwood Complex*  
**New Cafeteria**

