

January 4, 2008

New drawings for major Summer 2008 construction projects at Spring Lake Park High School

Wold Architects & Engineers unveiled new drawings for Phase II construction projects at District 16's Spring Lake Park High School at a December school board meeting. The drawings are included here. The school district is in the midst of a four-year

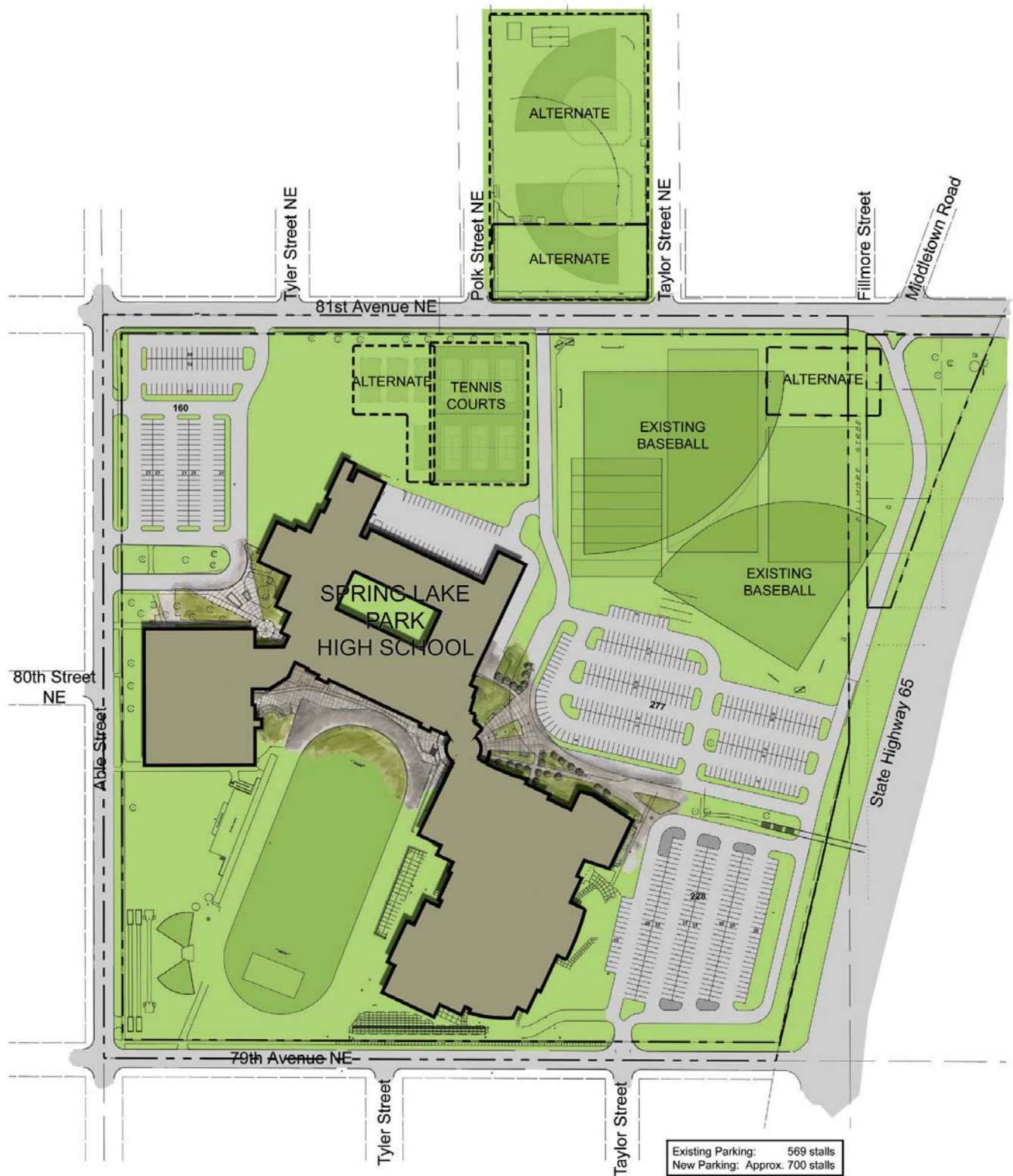
Facilities Improvement Plan that includes a significant renovation, expansion, and building program. Throughout this four years, "Bond Project Updates" offer more details and are available on the home page of the district website.

Aerial Perspective View from the Southwest of Spring Lake Park High School When Completed

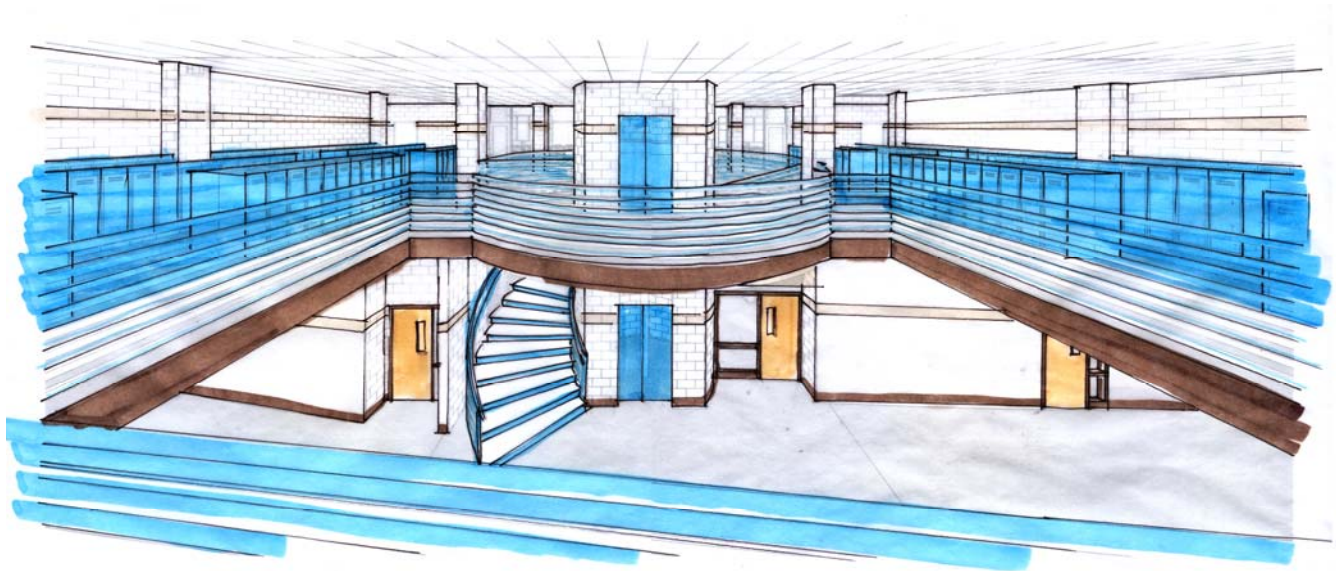
81st Avenue top-left, Central Avenue top-right, Phase II new main entrance (round) in center of drawing and new academic area in center-left (construction to begin Summer 2008), Phase I nearly completed fine arts/athletic addition to the right.



Spring Lake Park High School Overall Site Plan



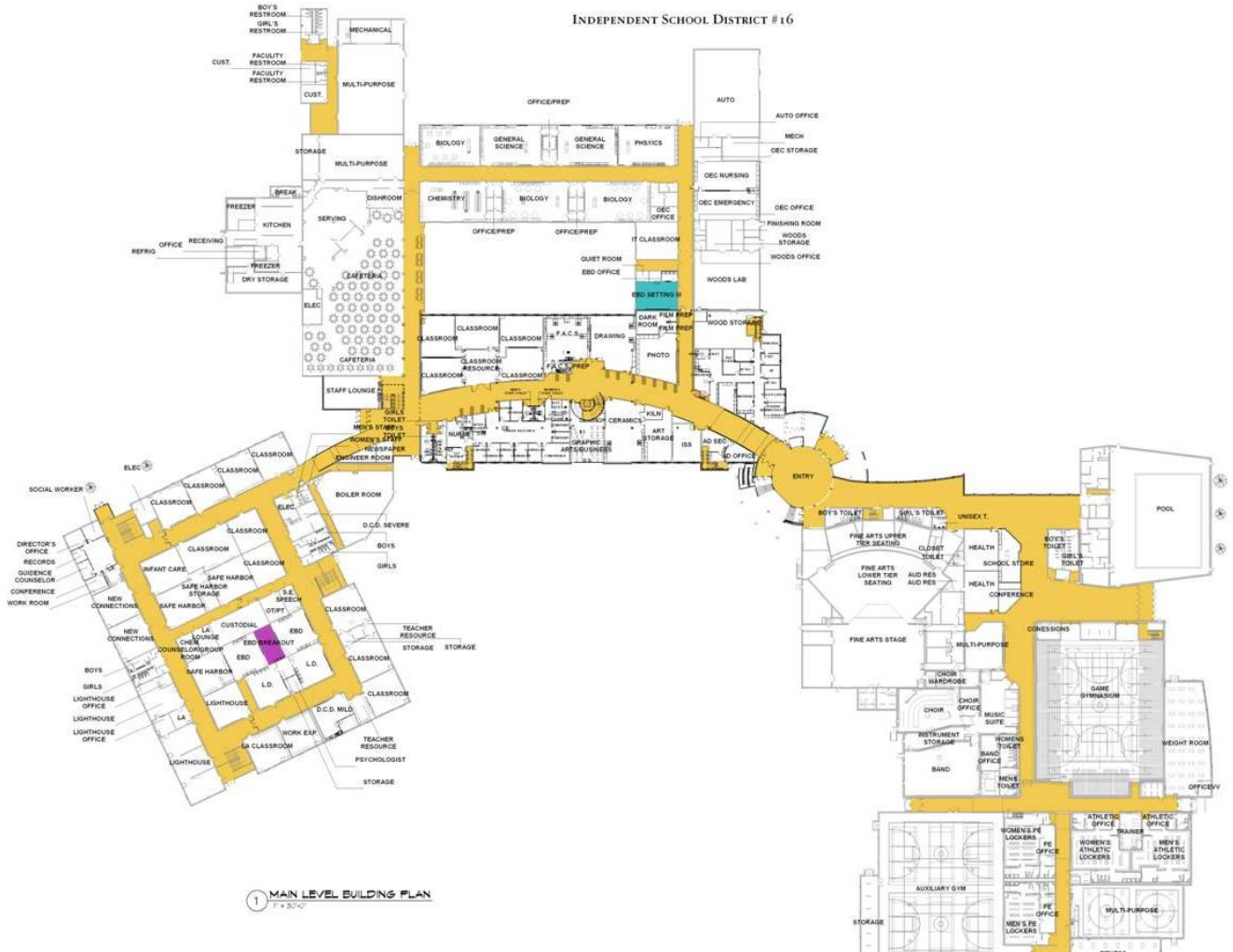
Spring Lake Park High School
Main Stairway in New Academic Area



Spring Lake Park High School
Nearly Completed Fine Arts/Athletic Addition from the Southeast



Spring Lake Park High School New Main Level Academic Area Enlarged



Spring Lake Park High School New Main Level Academic Area Enlarged Further

